

This event is being recorded and will be available on the school website>[Parent Information](#)>[Parent Collaboration Events](#)



**Brighton Hill
Community
School**
Making success inevitable

An introduction to

The BHCS CAREERS PROGRAMME

David Watkins: Brighton Hill Community School

Deputy Headteacher (Careers Lead)

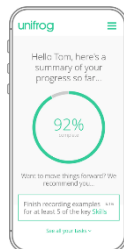
Presentation Content



To know the strategic frameworks we use to build our careers programme at BHCS



To understand what the BHCS Careers Vision Statement is and how to access the key supporting information available for parents about the careers programme



To understand how you can actively engage with & support your child at home in planning their post-16 and career ambitions

Presentation Content

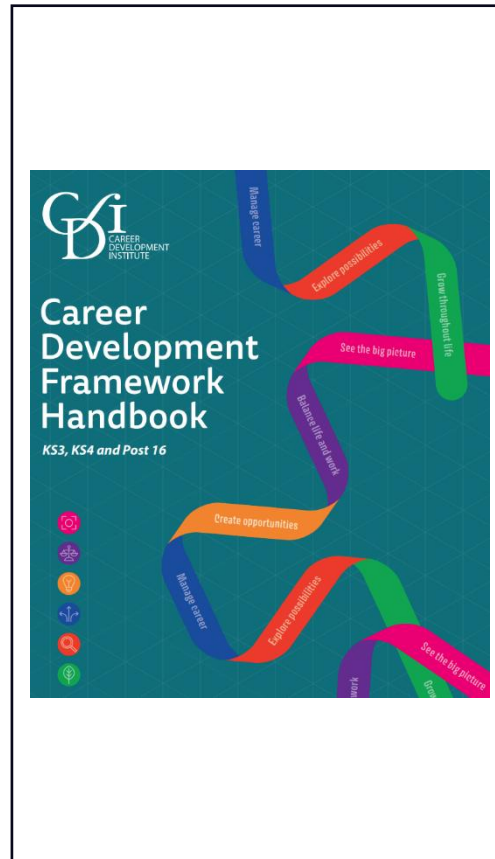


To know the strategic frameworks we use to build our careers programme at BHCS

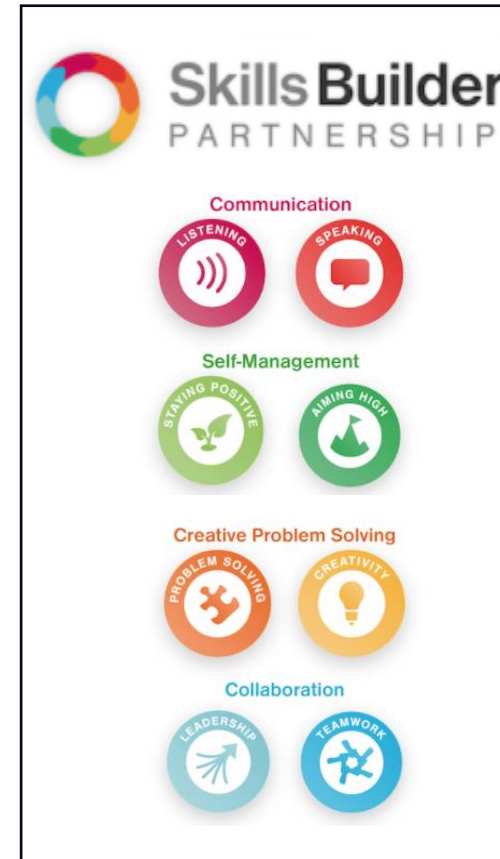
Strategic Frameworks



Strategic Strands

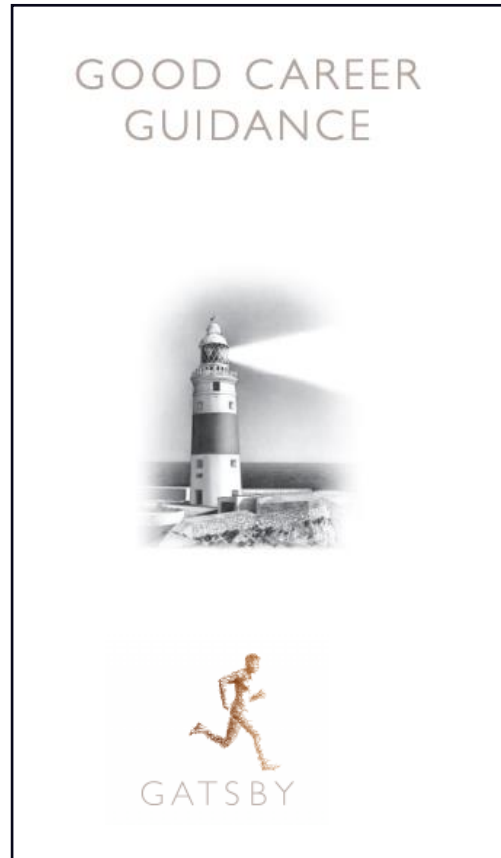


Learning Areas



Essential Skills

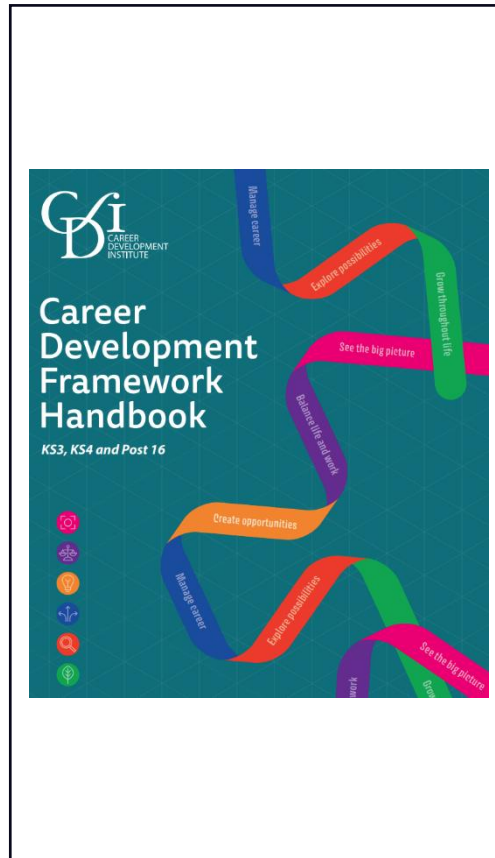
Strategic Frameworks



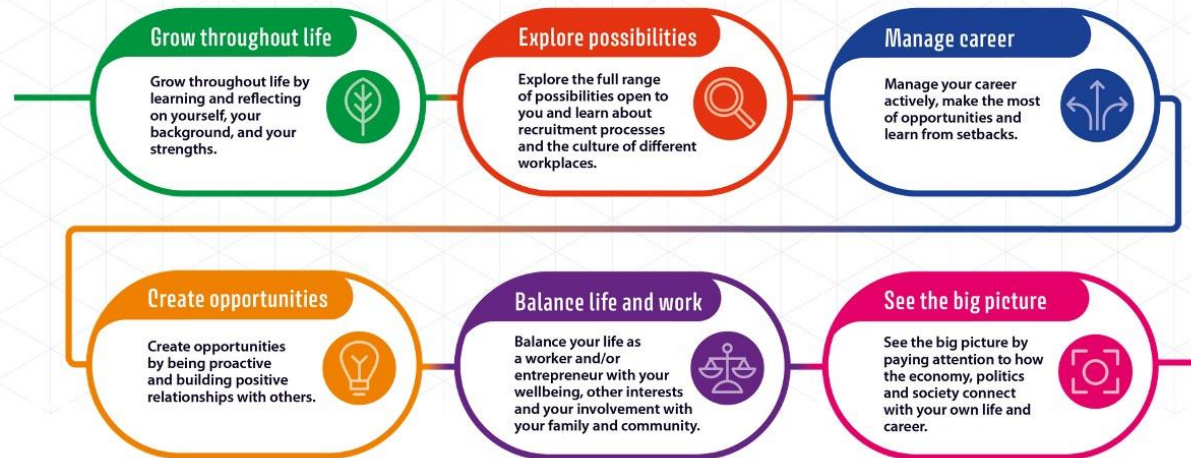
Strategic Strands

1. A stable careers programme
2. Learning from career and labour market information
3. Addressing the needs of each pupil
4. Linking curriculum learning to careers
5. Encounters with employers and employees
6. Experiences of workplaces
7. Encounters with further and higher education
8. Personal guidance

Strategic Frameworks



The six learning areas



Learning Areas

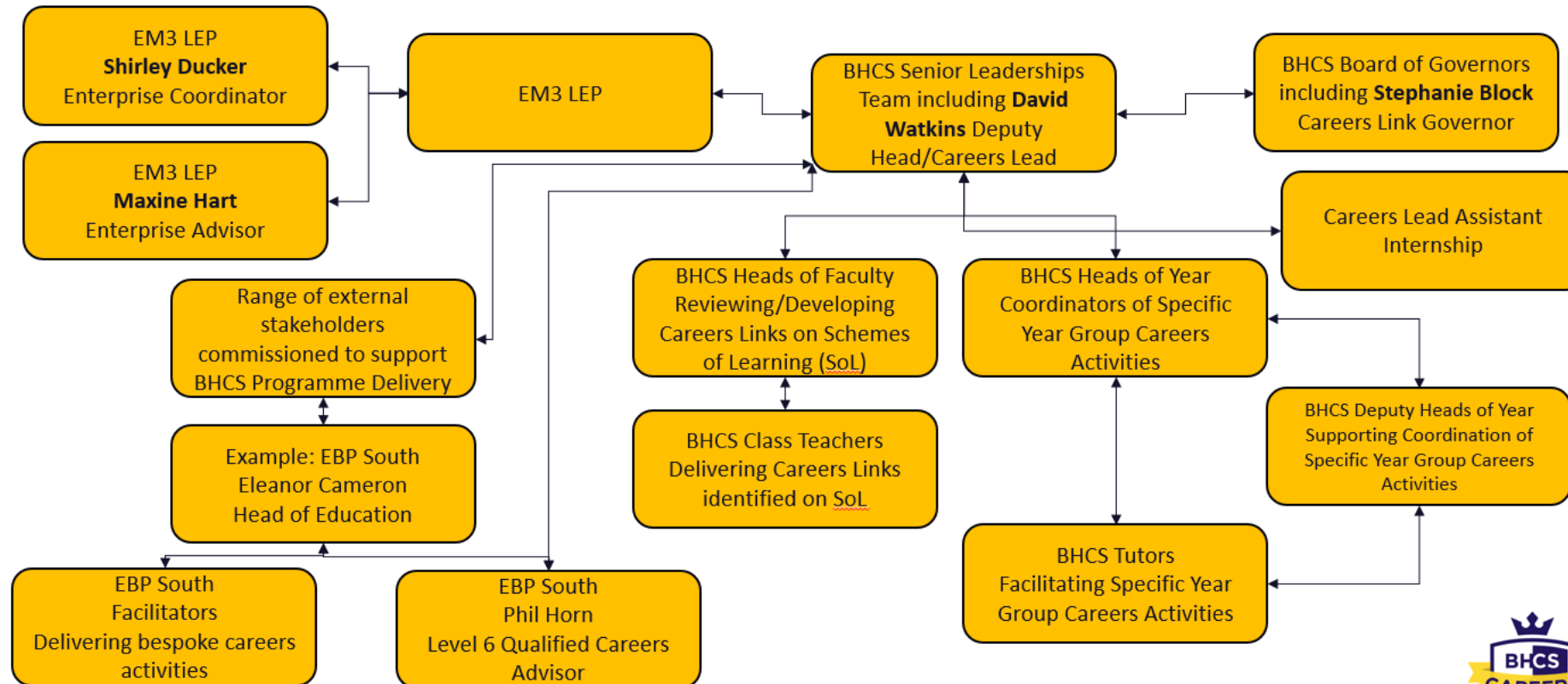
Strategic frameworks



Essential Skills

The Team Behind The Machine!

BHCS Management/Staffing Structure to Support CEIAG



Evaluation

COMPASS +

THE CAREERS &
ENTERPRISE
COMPANY

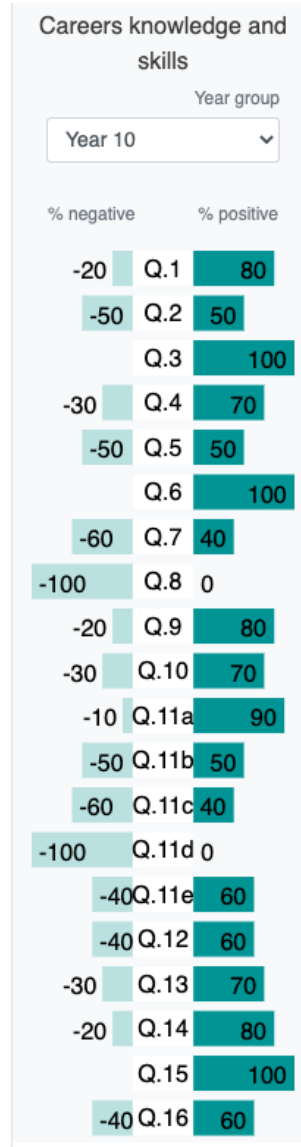
Gatsby Benchmark	% achieved in latest evaluation 	% schools fully achieving this Benchmark nationally 
1 - A stable careers programme	100%	43%
2 - Learning from career and labour market information	100%	66%
3 - Addressing the needs of each pupil	100%	38%
4 - Linking curriculum learning to careers	100%	60%
5 - Encounters with employers and employees	100%	56%
6 - Experiences of workplaces	100%	36%
7 - Encounters with further and higher education	100%	33%
8 - Personal guidance	100%	65%



Evaluation

COMPASS +

THE CAREERS & ENTERPRISE COMPANY



Do you understand this option after Year 11: T-Levels?

Do you have support to help you make education and career choices?

Do you understand this option after Year 11: Apprenticeships?

Evaluation: 2022 Ofsted Evaluation

Inspection of Brighton Hill Community School

Brighton Way, Basingstoke, Hampshire RG22 4HS



Inspection dates:

26 and 27 April 2022

Personal development

Outstanding

This learning is enhanced during the 'deep learning' days. These days provide important information about relationships and sex education as well as offering wide-ranging careers guidance. The careers programme itself is exceptionally ambitious. It links different subject areas with the world of work to ensure pupils have the knowledge they need when considering the next stage of their education.



Evaluation: DfE Staying in education or entering employment

This shows the number of pupils who either stayed in education or went into employment after finishing key stage 4 (after year 11, usually aged 16).



Evaluation

 The Quality in Careers Standard >>>>

CSW 
Investor in Careers

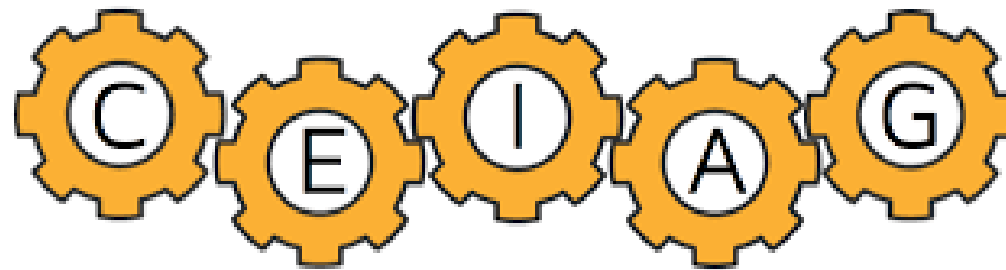

Evaluation



The Standard is fully aligned with the *Gatsby Benchmarks for "Good Career Guidance"* and complies with the DfE's Statutory Guidance.

As England's dedicated national quality award, the Quality in Careers Standard – through external assessment – uniquely accredits the four components of the CEIAG:

1. Careers Education
2. Careers Information
3. Careers Advice
4. Careers Guidance



Careers Education, Information, Advice and Guidance

Presentation Content



To know the strategic frameworks we use to build our careers programme at BHCS



To understand what the BHCS Careers Vision Statement is and how to access the key supporting information available for parents about the careers programme

BHCS Careers Vision Statement

BHCS Careers Vision Statement

The Brighton Hill Community School careers provision vision is to firmly embed a comprehensive careers programme within the curriculum, rooted in the Gatsby 8 Benchmarks.

The provision will recognise the needs of each individual student in our care, enriching and empowering them to access the next stage of their education, while being aspirational in these Post-16 choices, providing a pathway towards well informed career decisions which will change their lives for the better.

As a result, students will be happy, responsible citizens, prepared for the challenges they may face in life, who will continue to be aspirational in their life and career choices and so make positive contributions to society.



<https://www.brightonhill.hants.sch.uk/careers-and-enterprise>



BHCS Careers & Enterprise Webpages

The screenshot shows the homepage of Brighton Hill Community School. The background is a blurred image of students in a classroom. At the top right, there are links for 'Learning Zone', 'Contact Us', and social media icons for Facebook and Twitter. The school's logo and name 'Brighton Hill Community School' are in the top left. A navigation menu is centered below the header, with 'Our School' underlined. A dark blue dropdown menu is open, listing various school pages. The 'Careers and Enterprise' link is highlighted with a green border. In the bottom left, there is a yellow notification box for a 'Year 11 Parents' Evening'. At the bottom center, there is a school logo with the tagline 'Making success inevitable' and a downward-pointing arrow.

Learning Zone Contact Us f t

Brighton Hill Community School

Our School Parent Information Curriculum Pastoral

Headteacher's Welcome The SEND Department Vacancies Community

Governing Body Student Voice Train to Teach Yamaha Music School

Statutory Information **Careers and Enterprise**

School Policies

Year 11 Parents' Evening X
Year 11 Parents' Evening on
Wednesday, 23 March 3:30pm to
6:30pm via video call
[Read more](#)

Brighton Hill Community School
Making success inevitable

BHCS Careers & Enterprise Webpages

Published: 11-10-2021

BHCS Careers Vision Statement

The Brighton Hill Community School careers provision vision is to firmly embed a comprehensive careers programme within the curriculum, rooted in the Gatsby 8 Benchmarks.

The provision will recognise the needs of each individual student in our care, enriching and empowering them to access the next stage of their education, while being aspirational in these Post-16 choices, providing a pathway towards well informed career decisions which will change their lives for the better.

As a result, students will be happy, responsible citizens, prepared for the challenges they may face in life, who will continue to be aspirational in their life and career choices and so make positive contributions to society.



At BHCS we are committed to continued development of our Careers & Enterprise offer to students and in turn support the discussions parents, carers and staff will have with their children about the options available. We take pride in our commitment to reaching the [Gatsby Career Benchmarks](#). All students and parents should have access to high-quality information about future study options and labour market opportunities. At BHCS our students work with a qualified careers adviser across Year 10 & Year 11 to make best use of available information.

We are developing a Careers and Enterprise programme at BHCS that will mean that by the age of 14, all students will have accessed and used information about career paths and the labour market to inform their own decisions on study options. Just click on the relevant zone button below to start exploring.

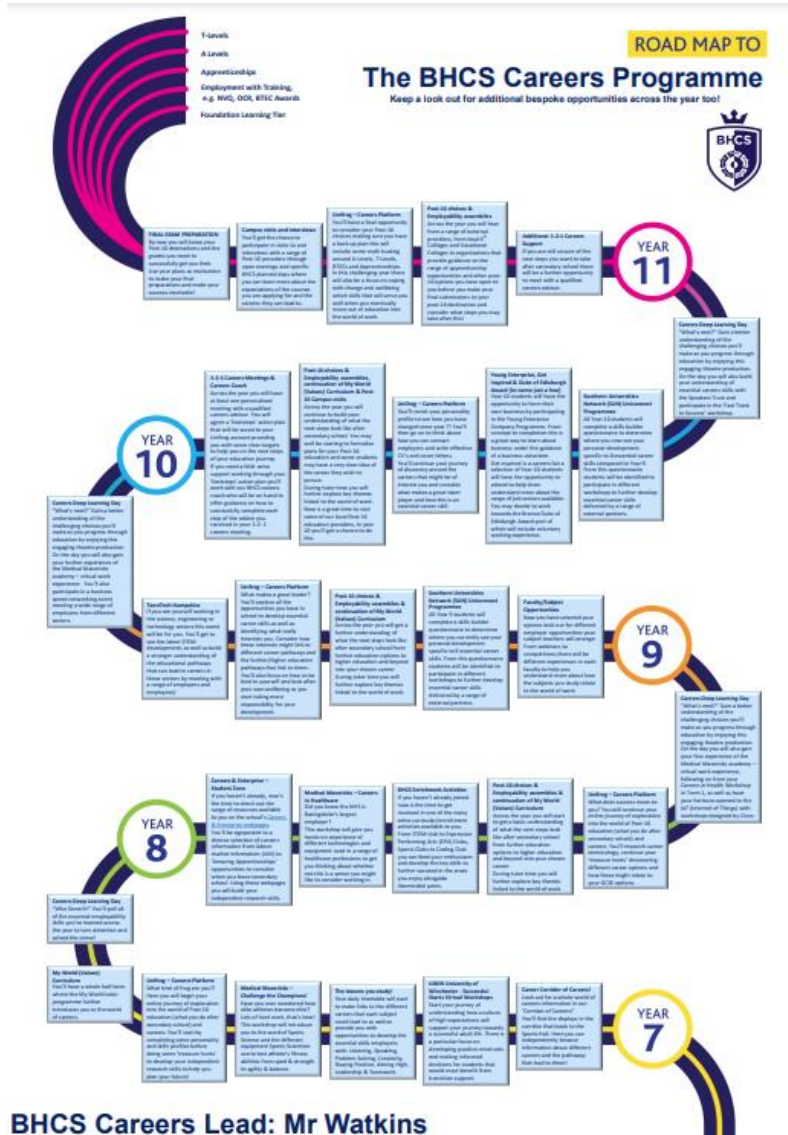


The 2023-24 academic year will see further developments in how we support our students, parents/carers and staff with good career education, information, advice & guidance (CEIAG). Arguably the most exciting of which is the school's commitment to achieving and maintaining the nationally recognised '[Quality in Careers Standard](#)' which is fully aligned to the Gatsby Benchmarks for 'Good Career Guidance', complies with the Department for Education's statutory guidance and will provide independent recognition of the quality of our CEIAG delivered across the BHCS Careers Programme. If you have any questions about CEIAG please do not hesitate to contact Mr David Watkins – Deputy Head SLT

Careers Lead



BHCS Careers & Enterprise Webpages



Strategic Planning



BHCS Careers Programme Overview

Documents that support our strategic approach to the BHCS careers programme:

- [Gatsby 8](#)
- [Careers in context](#)
- <https://www.gov.uk/government/publications/careers-guidance-provision-for-young-people-in-schools>

Vision: To become a [Quality in Careers Standard](#) School.

Gatsby Benchmark	Year Group	Supporting Activities	Lead
1. A stable Careers Programme	All	Careers Policy (updated September 2021)	DWS
	All	BHCS Curriculum Vision	SHB
	All	Compass +	DWS
	All	Enterprise M3 Local Enterprise Partnership	DWS
	All	Website	DWS
2. Learning from career & labour market information	All	Corridor of Careers: Dedicated area in school running the length of the sports hall corridor where students can access a range of display information linked to Further Education, Higher Education and Careers.	DWS
	All	Parent Zone Amazing Apprenticeships	DWS
	All	Student Zone	DWS
	All	Parent Collaboration Events	DWS
	All	Careers section in School Newsletter emailed home and available through the school website 'School News' section	DWS
	All	Unifrog student and staff accounts	DWS
3. Addressing the needs of each pupil	10 & 11	Careers Advisor (EBP South Basingstoke Consortium)	DWS/MSL
	10 & 11	Footsteps: Personalised action plan	DWS/MSL/PDG



BHCS Careers & Enterprise Webpages

[HOME](#) [OUR SCHOOL](#) [CAREERS AND ENTERPRISE](#)

Parent Zone



Welcome to the Careers & Enterprise Parent Zone! Did you know your child has a dedicated Careers & Enterprise Zone in School just for them? Why not ask them if they've visited it yet and what they've researched there? If they've yet to visit it, please encourage them to do so and ask them to feed back to you their findings!

Did you know your child has access to Unifrog? This is BHCS' preferred careers platform. In addition to guided lessons as part of our careers programme, students can also login at any time and complete tasks independently. You can find out more about 'Unifrog' by [watching this video](#). To help support engagement with your child, we are giving you the chance to set up your own parent account that you can use to see what it is like to use 'Unifrog'. Although GDPR rules prevent 'Unifrog' giving you direct access to your child's account, the parent account lets you see and use all the tools your child has access to. Simply [click this link](#) and use the sign-up code BRHCparents, then complete the rest of the details to set up your account. It says, 'student account sign up code' but we have agreed with 'Unifrog' this special parental option for you.

If you as a parent/carer want to find out more about any other aspect of our career's programme, you're in the right place! Pick from the options below depending on what you want to know.

Option 11



A parents' toolkit for career conversations

A parents' toolkit for career conversations. A parents' toolkit for career conversations. When it comes to education and careers, parents, carers, and guardians are the biggest influence in young people's lives.

www.talkingfutures.org.uk

Option 2

Why not visit one of our preferred online partners Careerpilot. They have a dedicated 'Parent Zone' that offers information to help parents and carers support young people in making the right decision about study and work. Below we've picked out some of the most relevant sections to your child's current education stage.

Careerpilot Parent Zone



Our School

Careers and Enterprise

Community

Contact

ECT Delivery Partner

Governing Body

Headteacher's Welcome

Performance Information

School Calendar

School Policies

Statutory Information

Student Council

The SEND Department

The Well-Being Centre (WBC)

Train To Teach

Vacancies

Yamaha Music School



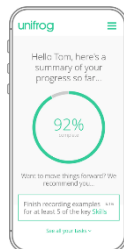
Presentation Content



To know the strategic frameworks we use to build our careers programme at BHCS



To understand what the BHCS Careers Vision Statement is and how to access the key supporting information available for parents about the careers programme



To understand how you can actively engage with & support your child at home in planning their post-16 and career ambitions

BHCS Careers & Enterprise Webpages

unifrog

Parent Zone



Welcome to the Careers & Enterprise Parent Zone! Did you know your child has a dedicated Careers & Enterprise Zone in School just for them? Why not ask them if they've visited it yet and what they've researched there? If they've yet to visit it, please encourage them to do so and ask them to feed back to you their findings!

Did you know your child has access to Unifrog? This is BHCS' preferred careers platform. In addition to guided lessons as part of our careers programme, students can also login at any time and complete tasks independently. You can find out more about 'Unifrog' by [watching this video](#). To help support engagement with your child, we are giving you the chance to set up your own parent account that you can use to see what it is like to use 'Unifrog'. Although GDPR rules prevent 'Unifrog' giving you direct access to your child's account, the parent account lets you see and use all the tools your child has access to. Simply [click this link](#) and use the sign-up code BRHCparents, then complete the rest of the details to set up your account. It says, 'student account sign up code' but we have agreed with 'Unifrog' this special parental option for you.

If you as a parent/carer want to find out more about any other aspect of our career's programme, you're in the right place! Pick from the options below depending on what you want to know.

Unifrog

unifrog

ABOUT BLOG INSIGHTS CASE STUDIES JOBS CONTACT SIGN IN

The complete destinations platform.

We help students compare every opportunity, then apply successfully. We also empower teachers and counselors to manage the progression process effectively.

Request a demo today.

Request demo

unifrog

Hello Tom, here's a summary of your progress so far...

74% complete

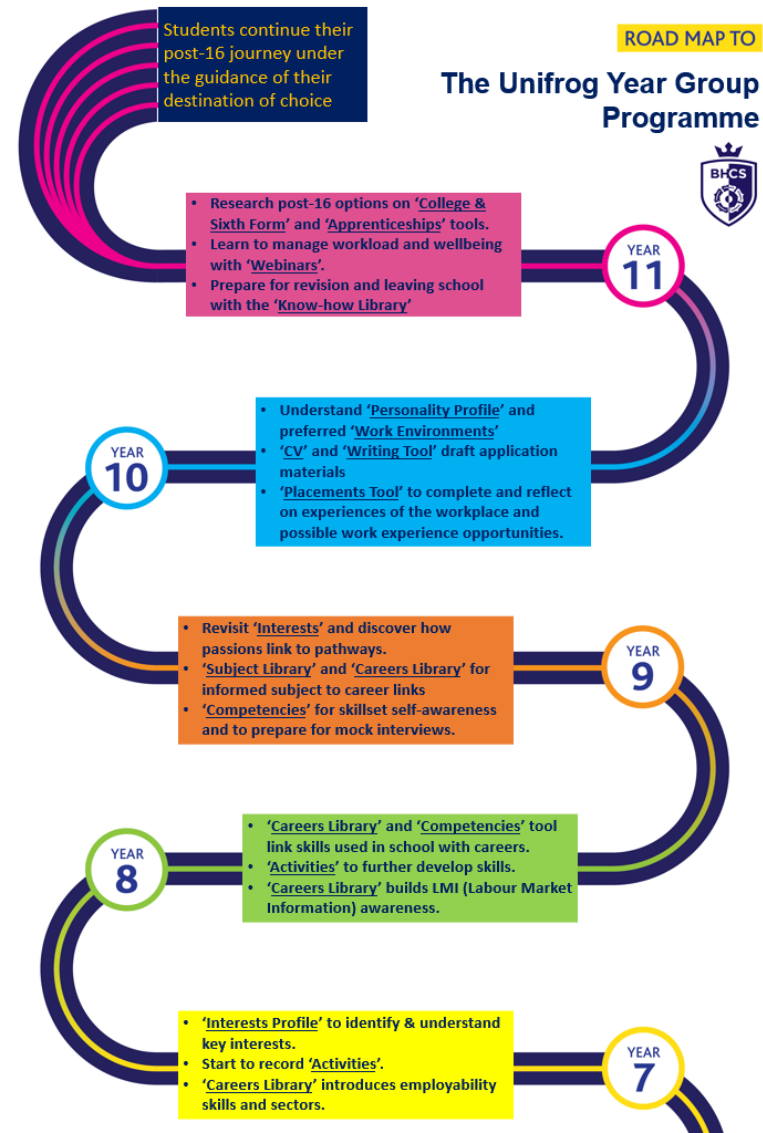
Want to move things forward? We recommend you...

Finish recording your 5 key competencies

See all your tasks

WHAT DOES THE UNIFROG COMMUNITY THINK?
Over 2,500 schools say...

Unifrog Year Group Programme



Unifrog Year Group Programme

unifrog

HOME

FAVOURITES

LOCKER

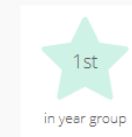
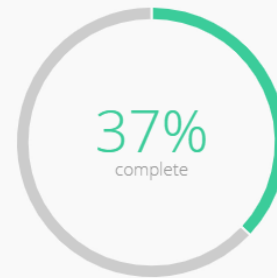
APPLY

HELP



TEACHER >

Hello David, here's a summary of your progress so far...



Want to move things forward? We recommend you...

Complete the [Interests quiz](#)

3.9%

[See all your tasks](#) v

ACCESS ALL THE TOOLS BELOW

Exploring pathways

Interests profile

✘ Quiz not taken

[Start >](#)

Personality profile

✔ Quiz last taken 18 Jan 21: ISTJ

[Start >](#)

Work environments profile

✘ Quiz not taken

[Start >](#)



Unifrog Year Group Programme

ACCESS ALL THE TOOLS BELOW

Exploring pathways

Interests profile

✘ Quiz not taken

Start >

Personality profile

✔ Quiz last taken 18 Jan 21: ISTJ

Start >

Work environments profile

✘ Quiz not taken

Start >

Careers library

✔ Careers favourited

Go to tool >

Subjects library

✘ Subjects favourited

Go to tool >

Know-how library

✘ Guides favourited

Go to tool >

MOOC

Make your first shortlist

Start >

Webinars

Hear directly from the experts

Go to tool >

Read, Watch, Listen

✘ Profiles favourited

Start >

Unifrog Year Group Programme

1 Start 2 Filter 3 Learn

Careers library

Find the best careers for you, then save your favourites here:

Animal care assistant

Animal care assistants look after animals in places like kennels, rescue centres or sanctuaries.
[Read the profile >](#)

Plumber

Plumbers fit and service hot and cold water systems, heating systems and drainage networks.
[Read the profile >](#)

Your favourite profiles
Click the heart buttons to add profiles here!
[Read the profile >](#)

Search by keyword

Search for careers using a keyword

[Go >](#)

Search by school subjects

Search for careers using the subjects you're studying at school that you like the most

Unifrog Year Group Programme

Animal care assistant

[Share](#)



[Back](#)

Working hours and environment

Working hours, patterns and environment

You may work shifts, including early starts and some evenings and weekends.

Working with animals can involve hard physical work, and you may work outdoors in all weathers.

Skills required

You'll need:

- the ability to handle animals patiently, gently and confidently
- the ability to cope with upsetting situations like working with injured or badly treated animals
- a willingness to do dirty or unpleasant tasks
- the ability to take responsibility for the duty of care of animals

Got evidence of these skills? Record your examples on the [Competencies tool](#) >

Related university subject profiles

These university subjects are related to this career;

Career path and progression

With experience, you could progress to supervisor or manager, or become self-employed.

You could also use your experience to move into other animal care careers, like veterinary nursing.

UK Entry Requirements

There are no set requirements, but some employers may ask for qualifications like GCSEs.

Experience of working with animals will help. You could gain this through [voluntary work](#).

Taking a college course in an area like animal care could help you gain some of the skills and knowledge you need in this job.

You could get into this job through an [apprenticeship](#).

[Lantra](#) has more information on being an animal care worker.

Related career profiles

You may also be interested in:

Unifrog Year Group Programme

Animal care assistant

Labour Market Information (LMI)

UK Current Jobs

Animal care and control services (SOC3)

UK jobs: 61,763

Hampshire jobs: 2,156 (1st of 214 UK LEAs)

Top 5 LEAs: Hampshire (2,156), Suffolk (2,088), Essex (1,932), Kent (1,890), Surrey (1,766)

UK Prospects

Caring personal service occupations (SOC2)

UK growth: +18.5% from 2017 to 2027, creating 478,062 jobs

South East growth: +18.8% from 2017 to 2027, creating 67,477 jobs

UK Salary

Animal care services occupations n.e.c. (SOC4)

UK annual median: £20,144

Animal care and control services (SOC3)

South East annual median: £20,551

Top 3 regions: London (£25,446), East of England (£22,454), Scotland (£21,487)

What is SOC?

Standard Occupational Classification (SOC) codes are the UK government's official method of sorting jobs into categories.

SOC4 sorts all jobs into 370 different categories, SOC3 has 90 categories, and SOC2 has 25.

Here's an example of how it works. The Unifrog careers profile 'Classical musician' goes into the SOC4 category 'Musicians', which goes into the SOC3 category 'Artistic, literary and media occupations', which in turn goes into the SOC2 category 'Culture, Media and Sports occupations'.

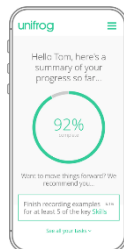
Presentation Content



To know the strategic frameworks we use to build our careers programme at BHCS



To understand what the BHCS Careers Vision Statement is and how to access the key supporting information available for parents about the careers programme



To understand how you can actively engage with & support your child at home in planning their post-16 and career ambitions



Brighton Hill Community School

Brighton Way
Basingstoke
Hampshire
RG22 4HS

Phone: **01256 350606**

Email: admin@brightonhill.hants.sch.uk

Thank you for your
time.

Questions?